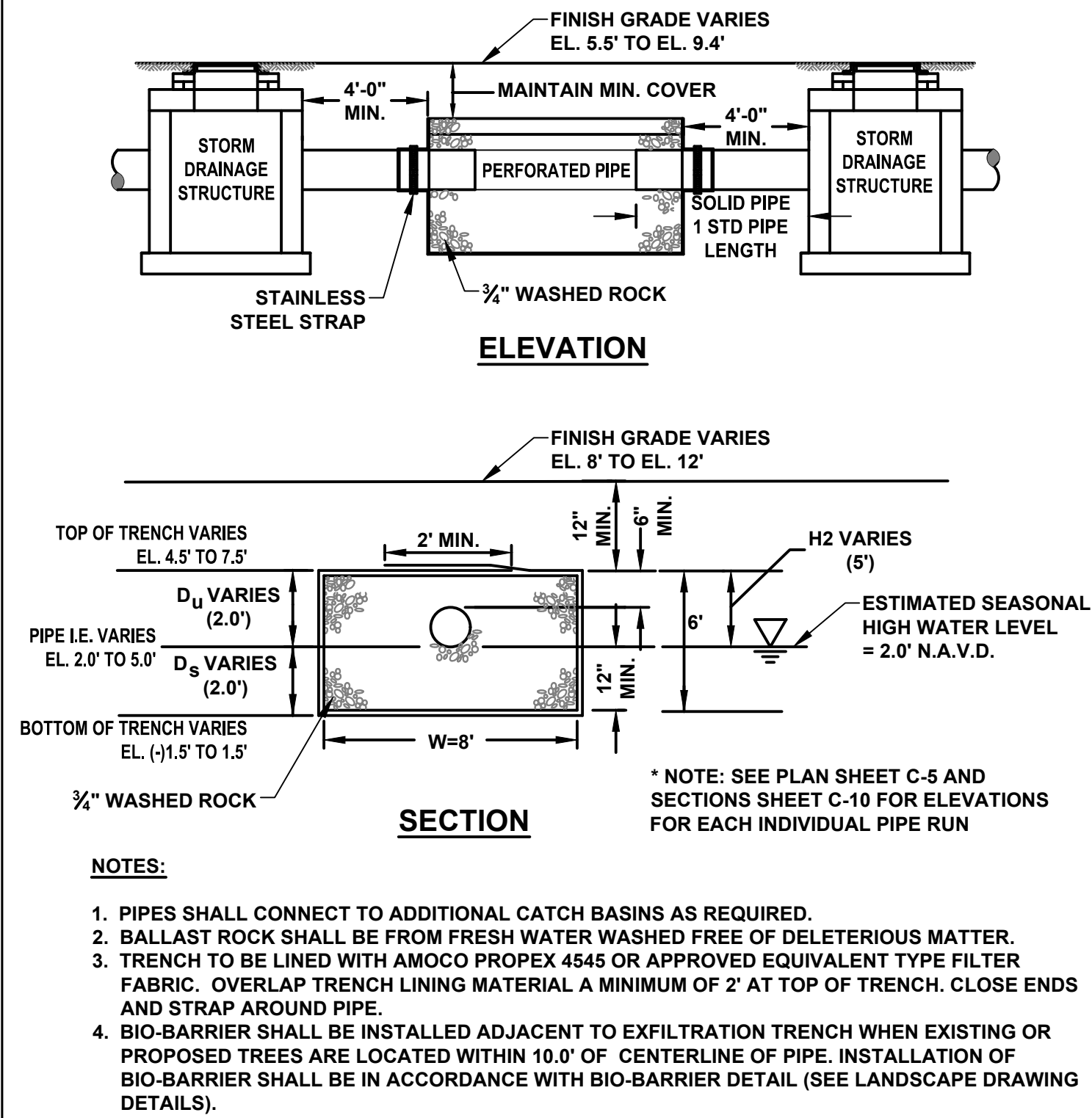
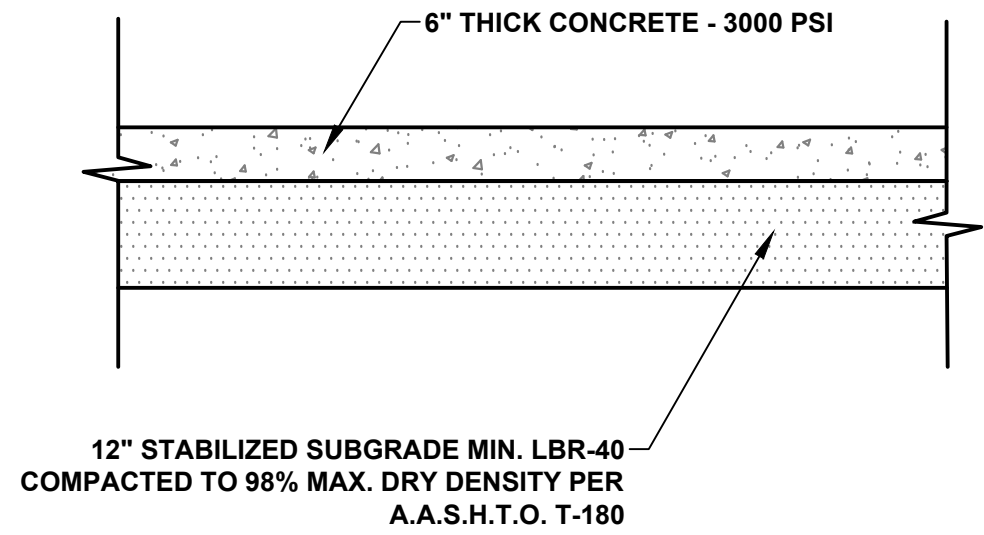
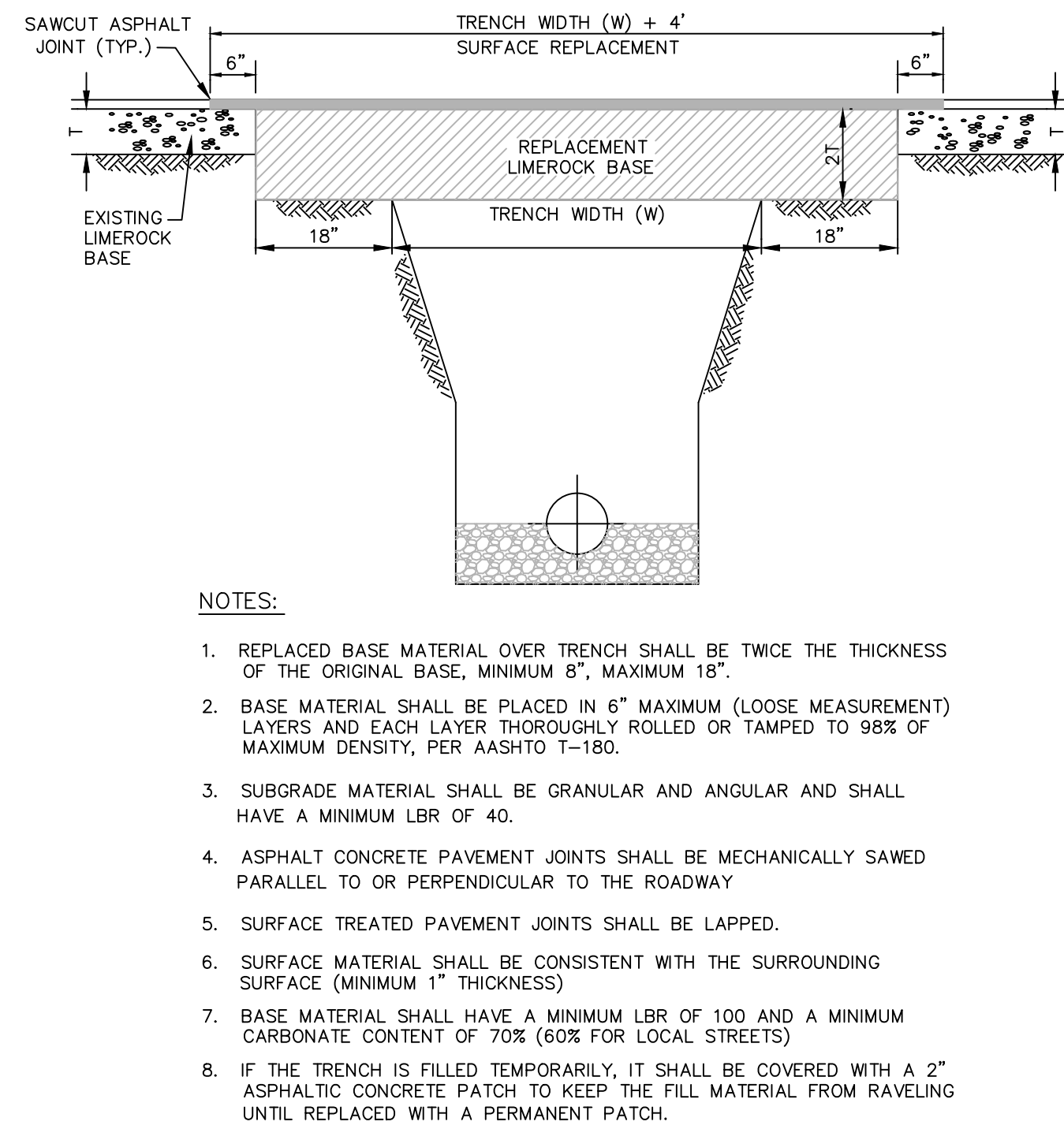
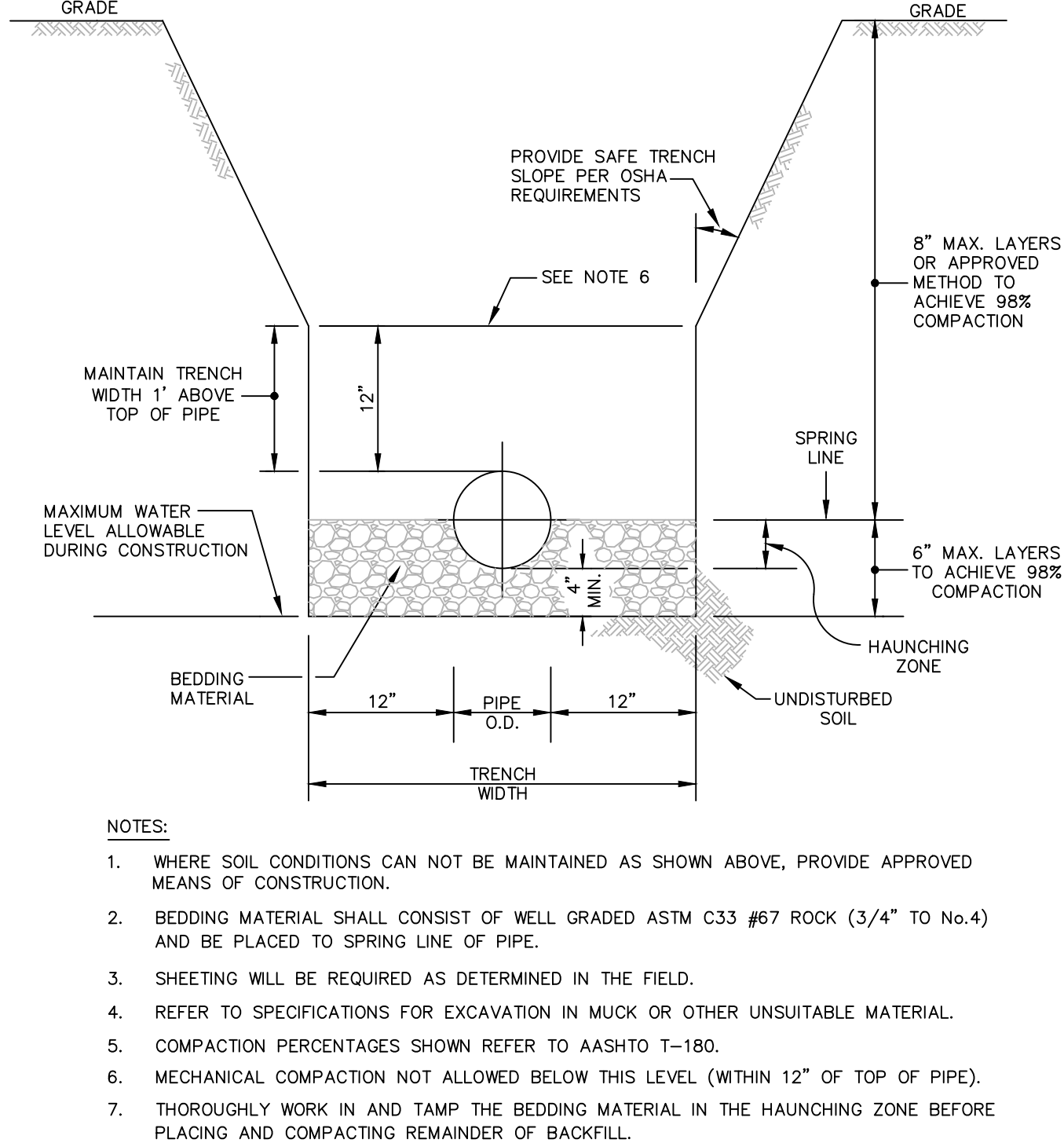


\\ctarlin02\Eng\Projects\2024\24-0055-PGDD.dwg [C-7] May 27, 2025 9:23am TRUBINO



EXFILTRATION TRENCH DETAIL

SCALE: N.T.S.



DRC

PZ24-12000026

08.20.2025

DATE:	04/30/25	AS SHOWN:	CEE	DESIGNED BY:	CEE	DRAWN BY:	TR	CHECKED BY:	CEE	APPROVED BY:	CEE
SCALE:											
BY:											
DESCRIPTION:											

CRAVEN - THOMPSON AND ASSOCIATES, INC.
ENGINEERS • PLANNERS • SURVEYORS
35653 N.W. 53RD STREET, FORT LAUDERDALE, FLORIDA 33309
FAX: (954) 739-6409 TEL: (954) 739-6400
FLORIDA LICENSED ENGINEERS, SURVEYORS & MAPPING BUSINESS NO. 2771
FLORIDA LICENSED LANDSCAPE ARCHITECTURE BUSINESS NO. C00014

MATERIAL SHOWN HEREIN IS THE PROPERTY OF CHAD E. EDWARDS, P.E. AND SHALL NOT BE REPRODUCED OR IN PART WITHOUT WRITTEN PERMISSION OF CHAD-EDWARDS & ASSOCIATES, INC. COPYRIGHT © 2015



DRC

PZ24-12000026

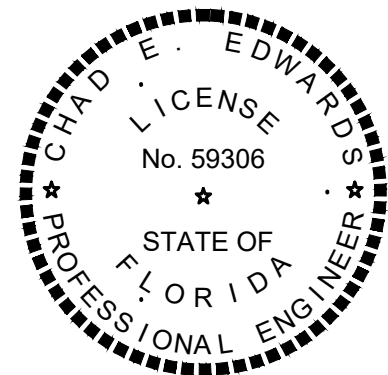
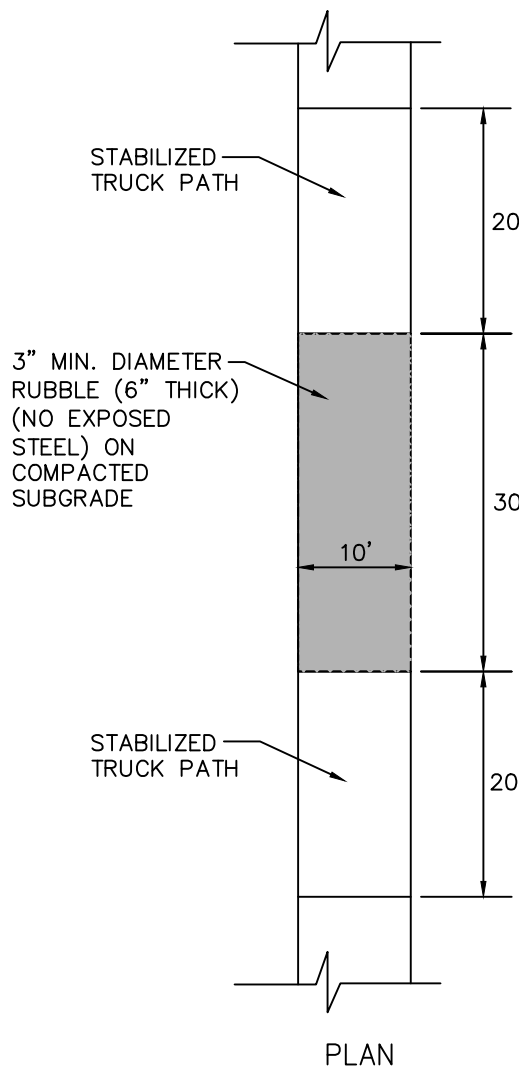
07.02.2025

1501 WEST ATLANTIC BLVD. POMPANO BEACH, FLORIDA PREPARED FOR: KAJA PROPERTIES INC.	DETAILS
---	---------

CHAD E. EDWARDS, P.E.
FLORIDA LICENSE No. 59306
2025-05-27

PROJECT NO.
24-0055-001-01

C-7
SHEET 7 OF 14



This document has been digitally signed and sealed by Chad Everett Edwards, P.E. on the date indicated here. Printed copies of this document are not considered signed and sealed and the signature must be verified on any electronic copies.